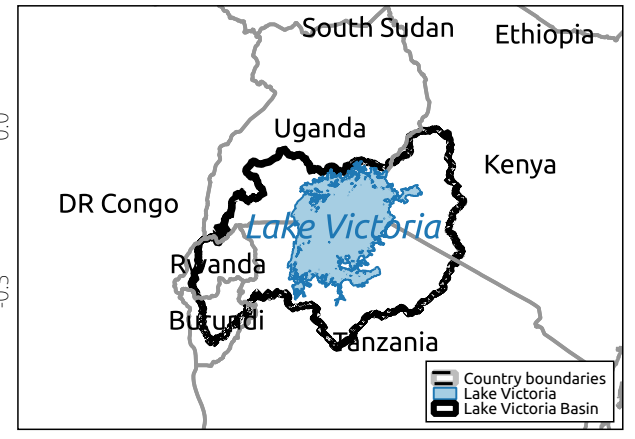


LVB land cover in 1985

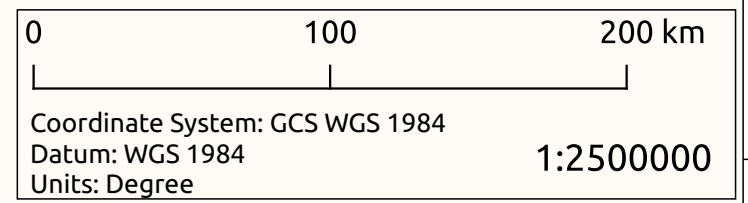
This map depicts 12 different land cover types of LVB. The land cover is derived from Landsat 4 and 5 satellite images taken in the year 1985.

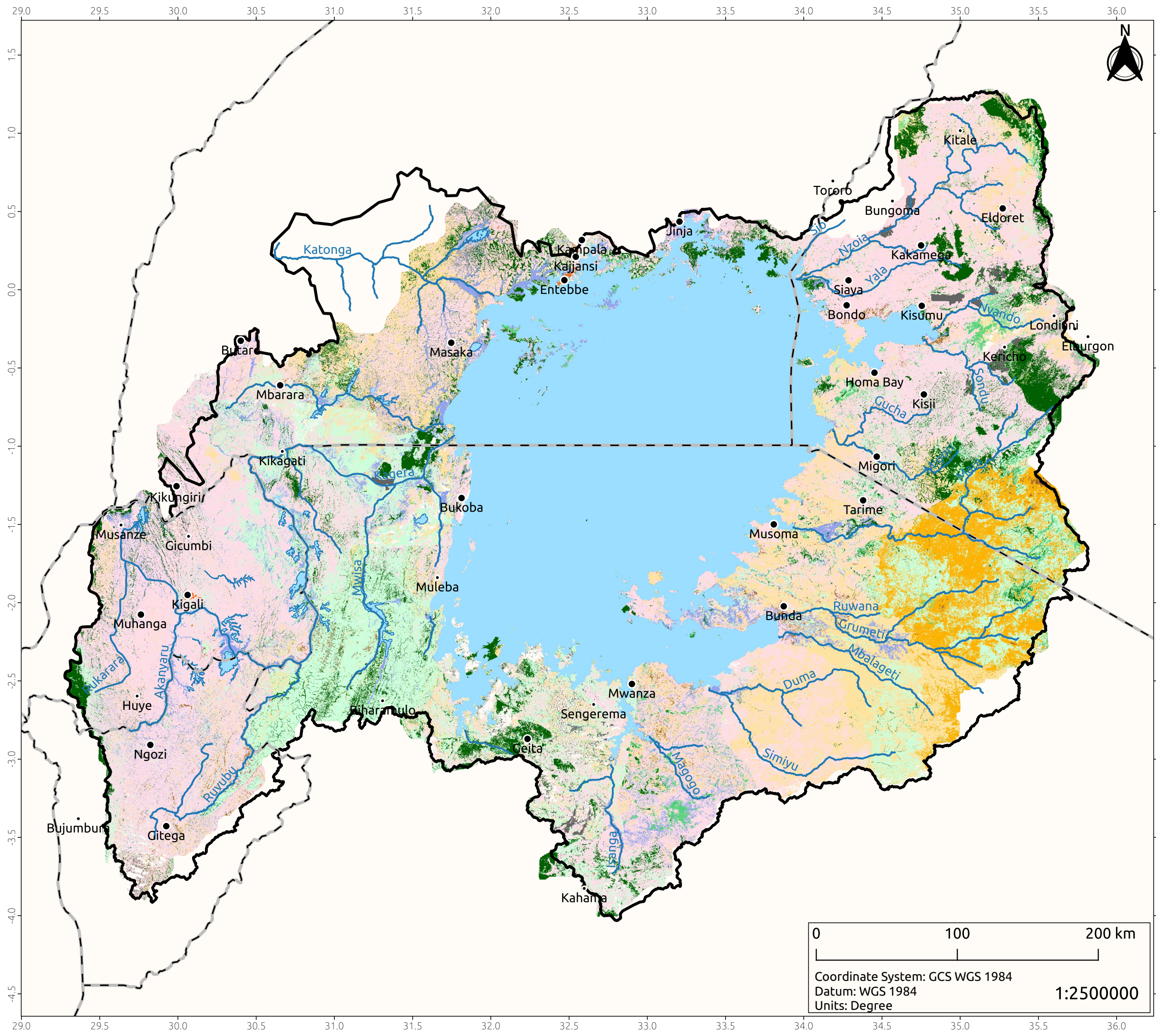


- #### Legend
- Major cities
 - Towns
 - Main lakes in LVB
 - ▭ Lake Victoria Basin
 - ▭ Country boundaries
- Landsat 4 & 5 land cover 1985**
- Bare Soil (0.7%)
 - Urban Areas (0.1%)
 - Wetland (4.0%)
 - Waterbody (26.8%)
 - Small Scale Farmlands (22.0%)
 - Large Scale Farmlands (0.2%)
 - Large Scale Farmlands Forest (0.3%)
 - Open Grasslands (13.0%)
 - Closed Grasslands (0.9%)
 - Open Woodland (19.0%)
 - Closed Woodland (6.2%)
 - Indigenous Forest (6.7%)

Map Code: 20221011 IWRMP LVB Landcover 1985
Landsat 4&5 Map

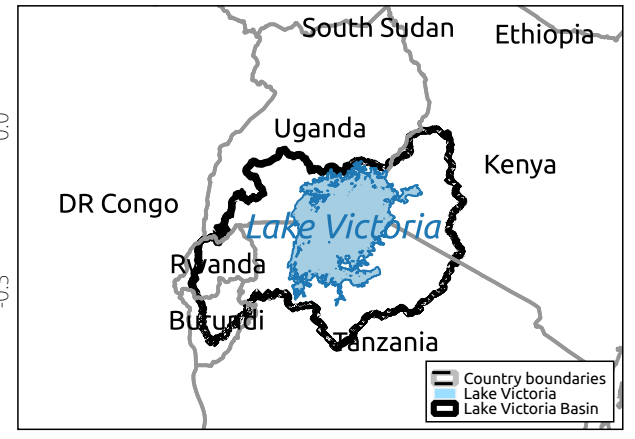
Disclaimer:
LVBC is not an authority on administrative boundaries.





LVB land cover in 1990

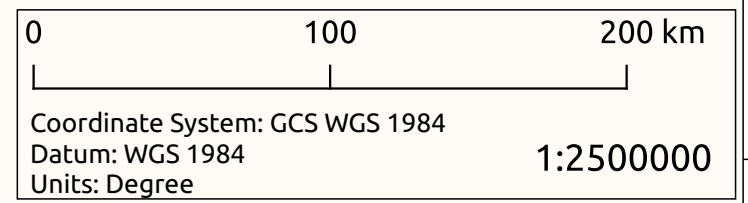
This map depicts 12 different land cover types of LVB. The land cover is derived from Landsat 4 and 5 satellite images taken in the year 1990.

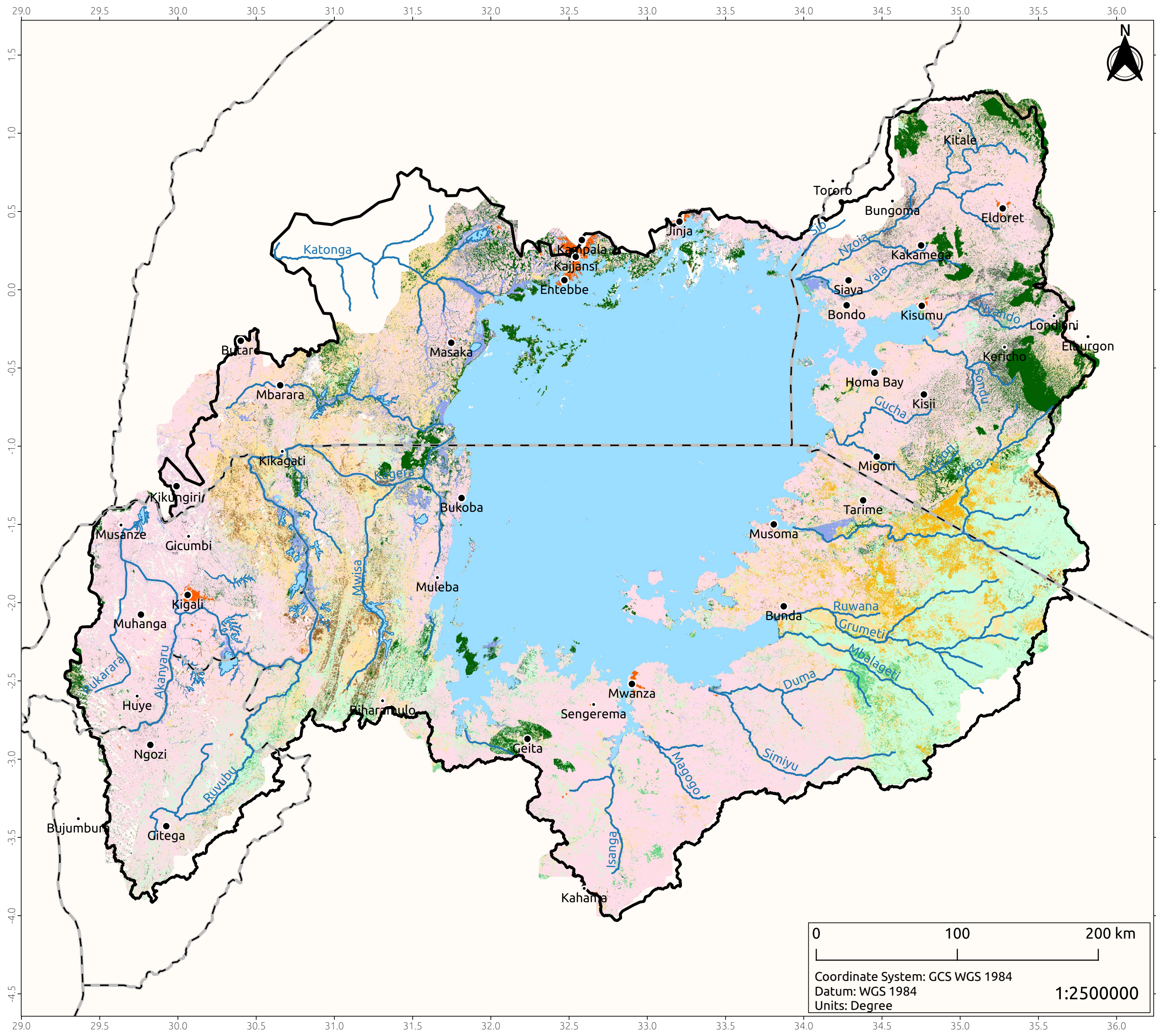


- #### Legend
- Major cities
 - Towns
 - Main lakes in LVB
 - ▭ Lake Victoria Basin
 - ▭ Country boundaries
- Landsat 4 & 5 land cover 1990
- Bare Soil (0.5%)
 - Urban Areas (0.1%)
 - Wetland (3.4%)
 - Waterbody (26.6%)
 - Small Scale Farmlands (31.4%)
 - Large Scale Farmlands (0.7%)
 - Large Scale Farmlands Forest (0.2%)
 - Open Grasslands (12.5%)
 - Closed Grasslands (3.1%)
 - Open Woodland (13.4%)
 - Closed Woodland (1.5%)
 - Indigenous Forest (5.5%)

Map Code: 20221011 IWRMP LVB Landcover 1990
Landsat 4&5 Map

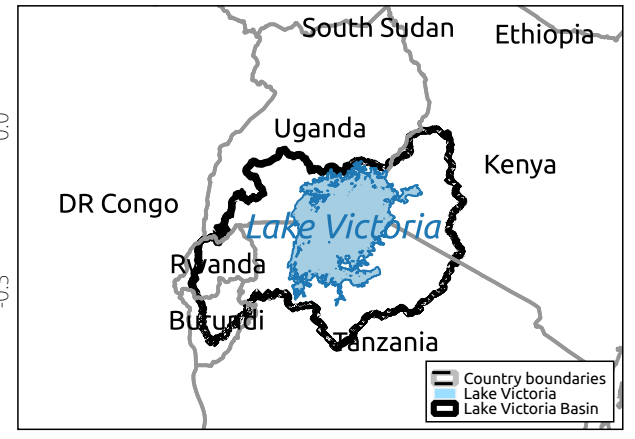
Disclaimer:
LVBC is not an authority on administrative boundaries.





LVB land cover in 2000

This map depicts 12 different land cover types of LVB. The land cover is derived from Landsat 4 and 5 satellite images taken in the year 2000.



Legend

- Major cities
- Towns
- Main lakes in LVB
- ▭ Lake Victoria Basin
- ▭ Country boundaries

Landsat 4 & 5 land cover 2000

- Bare Soil (1%)
- Urban Areas (0.3%)
- Wetland (2.2%)
- Waterbody (26.5%)
- Small Scale Farmlands (38.0%)
- Large Scale Farmlands (0.6%)
- Large Scale Farmlands Forest (0.6%)
- Open Grasslands (10.3%)
- Closed Grasslands (1.6%)
- Open Woodland (11.5%)
- Closed Woodland (1.2%)
- Indigenous Forest (4.8%)

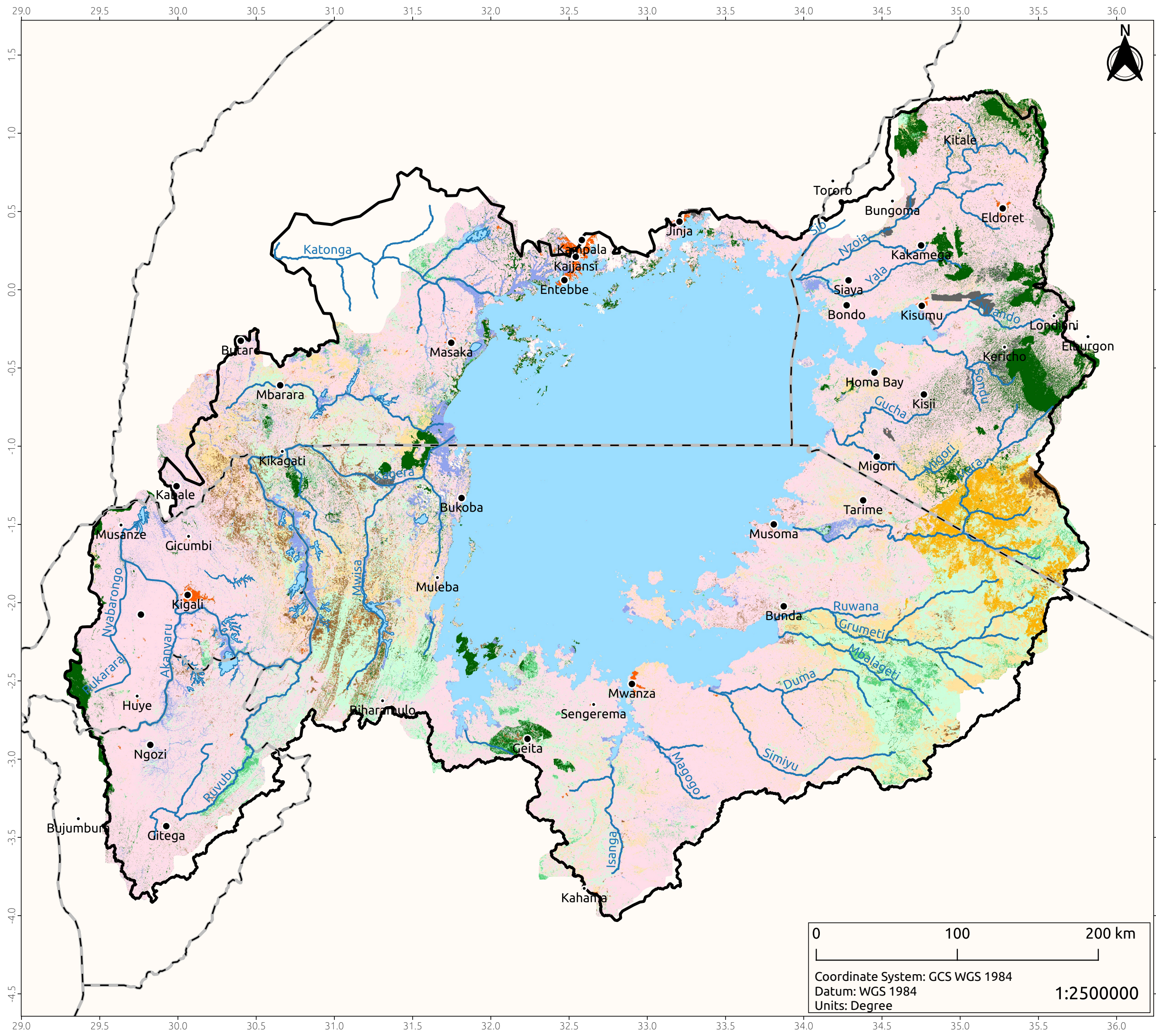
Map Code: 20221011 IWRMP LVB Landcover 2000
Landsat 4&5 Map

Disclaimer:
LVBC is not an authority on administrative boundaries.

0 100 200 km

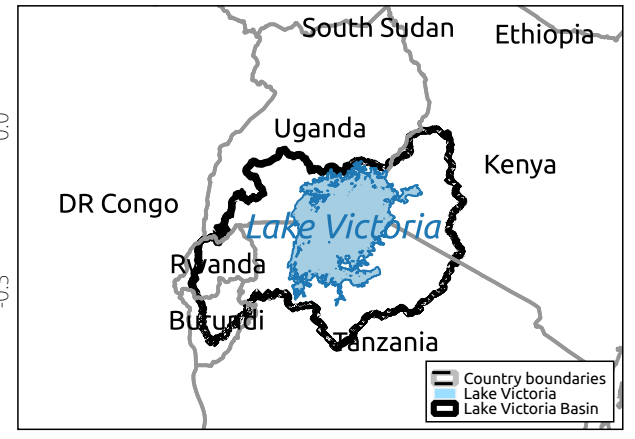
Coordinate System: GCS WGS 1984
Datum: WGS 1984
Units: Degree

1:2500000



LVB land cover in 2014

This map depicts 12 different land cover types of LVB. The land cover is derived from Landsat 8 satellite images taken in the year 2014.



Legend

- Major cities
- Towns
- Main lakes in LVB
- ▭ Lake Victoria Basin
- ▭ Country boundaries

Landsat 8 land cover 2014

- Bare Soil (1.6%)
- urban Areas (0.3%)
- Wetland (2.6%)
- Waterbody (26.7%)
- Small Scale Farmlands (42.9%)
- Large Scale Farmlands (0.3%)
- Large Scale Farmlands, Forest (0.3%)
- Open Grasslands (7.6%)
- Closed Grasslands (1.4%)
- Open Woodland (10.6%)
- Closed Woodland (1.5%)
- Indigenous Forest (3.7%)

Map Code: 20221011 IWRMP LVB Landcover 2014 Landsat 8 Map

Disclaimer:
LVBC is not an authority on administrative boundaries.

